



## MONDÉCO

Seamless Resin Terrazzo

- ✓ Retail
- ✓ Leisure
- ✓ Airports
- ✓ Transport
- ✓ Offices
- ✓ Pharmaceutical

# Seamless Resin Terrazzo from Flowcrete UK

---



Flowcrete UK's seamless terrazzo flooring range, Mondéco, is the ultimate flooring choice for commercial environments owing to its eye-catching and durable finish.

Terrazzo flooring dates back to Ancient Rome where its vibrant, wear-resistant and flexible qualities proved popular with forward-thinking architects building the first modern empire.

Fast-forward to the present day, where Flowcrete's take on this impressive flooring solution remains the first-choice for designers across the globe. Offering a mix of aggregates ranging from sparkling crystal mirror glass right through to tough flint and granite chippings, the Mondéco range is the designer's dream for all interior flooring projects.

---

## Application Suitability



Retail



Leisure



Airports



Transport

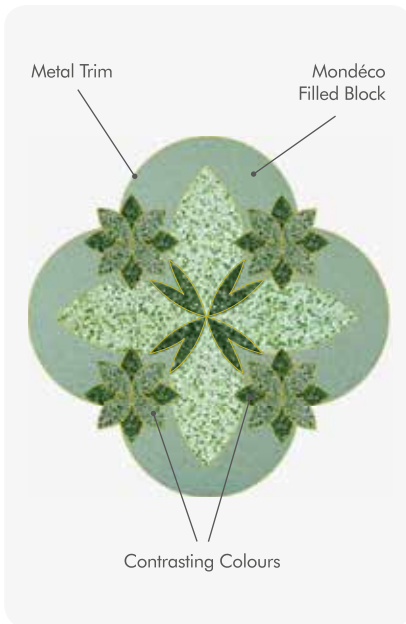


Offices



Pharmaceutical

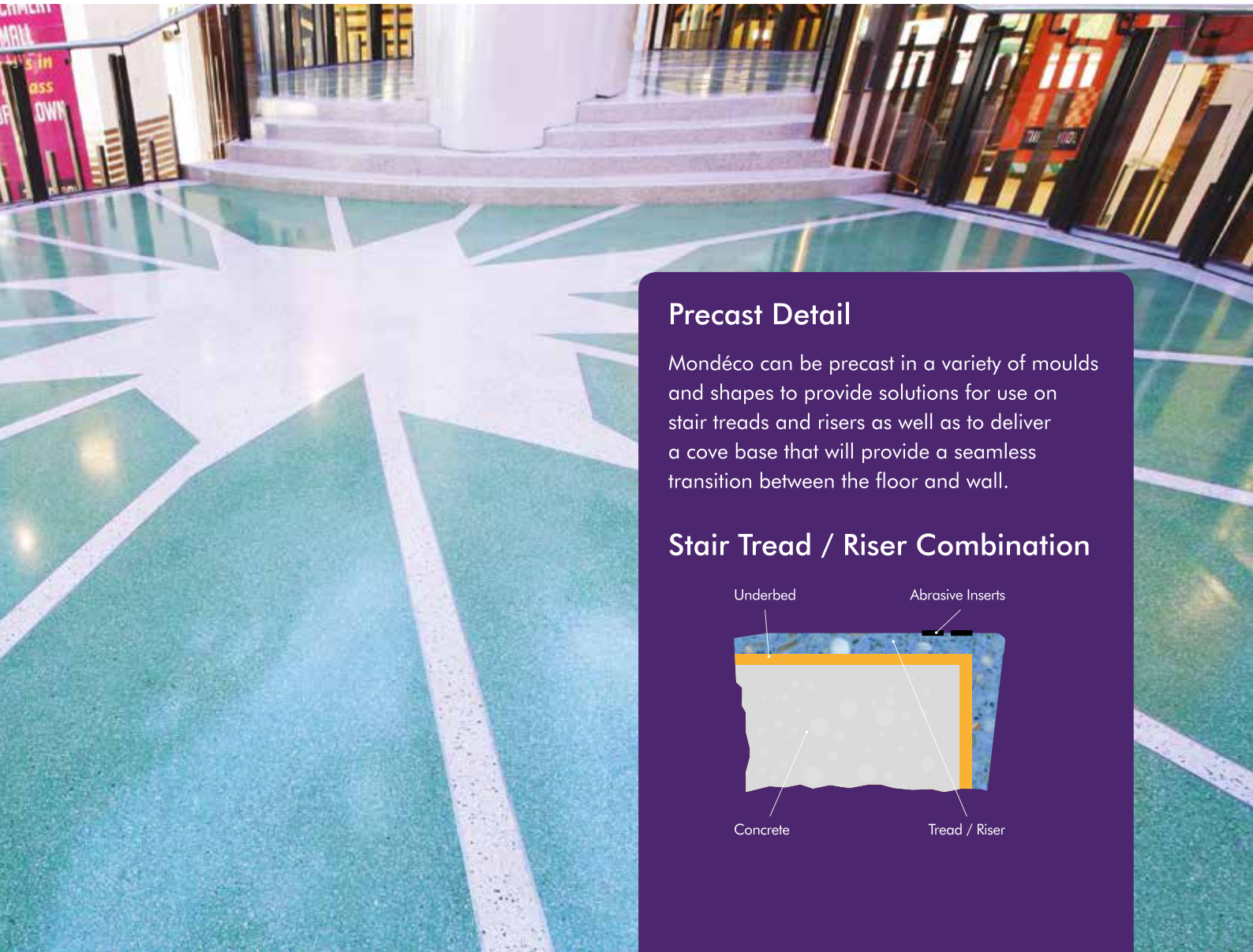
# Creative Design Potential



Perhaps the greatest benefit of terrazzo for architects and interior designers is how flexible the material can be in terms of its application.

Mondéco can be installed in a variety of complicated patterns and precision cut forms using brass or aluminium trims, which are laid on the surface of the floor in a matrix that designates each area of the design. Mondéco is simply used to fill each colour block before the whole surface is ground to reveal the stunning design.

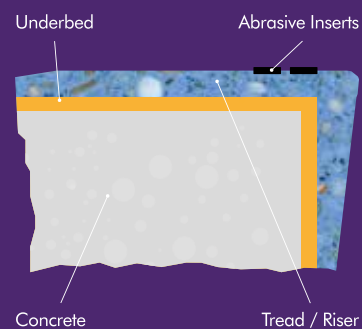
Bespoke colour blends are available to create a bold, unique and eye-catching floor finish. Flowcrete UK now offers white systems that maintain their vibrancy through the provision of superior UV light resistance, enhancing environments with a bright, welcoming and light-reflective finish.



## Precast Detail

Mondéco can be precast in a variety of moulds and shapes to provide solutions for use on stair treads and risers as well as to deliver a cove base that will provide a seamless transition between the floor and wall.

## Stair Tread / Riser Combination



## Technical Profile

### FIRE RESISTANCE:

EN 13501-1

B<sub>FL</sub>-s1

### SLIP RESISTANCE:

BS 7976-2

Dry >40  
Low slip potential

### TEMPERATURE RESISTANCE:

Tolerant of sustained temperatures up to 60°C

### WATER PERMEABILITY:

Karsten Test

Nil (Impermeable)

### WEAR RESISTANCE:

EN 13892-4

Max. wear depth <50 µm

### IMPACT RESISTANCE:

EN ISO 6272

4 Nm

### COMPRESSIVE STRENGTH:

EN 13892-2

>55 N/mm<sup>2</sup>

## Mondéco Arctic

(6–7mm nominal)

A seamless epoxy resin terrazzo floor finish utilising a white binder with a blend of light coloured aggregates, mirror glass and metallic particles.

With a bright finish, this low maintenance system creates a contemporary feel underfoot, ideal for areas where aesthetics are of prime concern.



Superior UV resistance properties



Minimalist, bold aesthetic



Seamless finish (except for underlying slab joints)



## Standard Colours\*



Glacier



Alaska



Polar

\*The applied colours may differ from the examples shown. Special colour blends and tailored aggregate mixes are available. For further information and samples, contact your local Flowcrete office.



## Standard Colours\*



Botticino



Sapphire



Nephrite



Sodalite



Pearl Grey



Bardiglio



Haematite



Black Diamond

\*The applied colours may differ from the examples shown. Special colour blends and tailored aggregate mixes are available. For further information and samples, contact your local Flowcrete office.

## Mondéco Mirrazzo

(6–7mm nominal)

A seamless, hardwearing, epoxy resin terrazzo floor finish comprising a blend of aggregates to deliver a contemporary aesthetic.

Containing crushed clear, coloured and mirrored glass alongside metallic particles, this system creates a glamorous finish underfoot, ideal for hotels and restaurants.



Contains more than 50% recycled material



Luxurious, sparkling aesthetic



High abrasion resistance

## Technical Profile

### FIRE RESISTANCE:

EN 13501-1

B<sub>FL</sub>-s1

### SLIP RESISTANCE:

BS 7976-2

Dry >40  
Low slip potential

### TEMPERATURE RESISTANCE:

Tolerant of sustained temperatures up to 60°C

### WATER PERMEABILITY:

Karsten Test

Nil (Impermeable)

### WEAR RESISTANCE:

EN 13892-4

Max. wear depth <50 µm

### IMPACT RESISTANCE:

EN ISO 6272

4 Nm

### COMPRESSIVE STRENGTH:

EN 13892-2

>55 N/mm<sup>2</sup>

# Mondéco Classic (9mm)

A seamless, epoxy resin terrazzo floor finish incorporating marble chippings for a decorative, contemporary finish underfoot.

Enduring high traffic levels, this system is suitable for airport terminals, shopping centres, hotels and areas where design and durability are key.



### Attractive:

Offers extensive design potential to deliver the wow-factor underfoot.



### Low Maintenance:

Delivers a hygienic seamless surface that is easy to clean and maintain.



### Chemical Resistant:

High resistance to aggressive cleaning agents and substance spillages.



### Abrasion Resistant:

Holds its own against high levels of sustained pedestrian traffic.



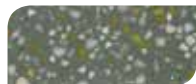
### Durable:

Highly durable finish delivers an impressive life cycle performance.

## Standard Resin Colours and Aggregate Blends\*



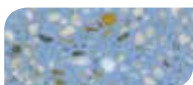
Oyster White  
(Mondéco Classic Dawn)



Dusty Grey  
(Mondéco Classic Dawn)



Agate Grey  
(Mondéco Classic Dawn)



Provence Blue  
(Mondéco Classic Dawn)



Oyster White  
(Mondéco Classic Dusk)



Dusty Grey  
(Mondéco Classic Dusk)



Agate Grey  
(Mondéco Classic Dusk)



Provence Blue  
(Mondéco Classic Dusk)

\*The applied colours may differ from the examples shown. Special colour blends and tailored aggregate mixes are available. For further information and samples, contact your local Flowcrete office.

## Technical Profile

### FIRE RESISTANCE:

EN 13501-1

B<sub>FL</sub>-s1

### SLIP RESISTANCE:

BS 7976-2

Dry >40  
Low slip potential

### TEMPERATURE RESISTANCE:

Tolerant of sustained temperatures up to 60°C

### WATER PERMEABILITY:

Karsten Test

Nil (Impermeable)

### WEAR RESISTANCE:

EN 13892-4

Max. wear depth <50 µm

### IMPACT RESISTANCE:

EN ISO 6272

16 Nm

### COMPRESSIVE STRENGTH:

EN 13892-2

>55 N/mm<sup>2</sup>

### FLEXURAL STRENGTH:

EN 13892-2

>20 N/mm<sup>2</sup>

### TENSILE STRENGTH:

BS 6319-7

>10 N/mm<sup>2</sup>

### BOND STRENGTH:

EN 13892-8

>2.0 N/mm<sup>2</sup>

### SPEED OF CURE:

10°C

20°C

30°C

Light Traffic

24 hrs

16 hrs

10 hrs

Full Traffic

72 hrs

48 hrs

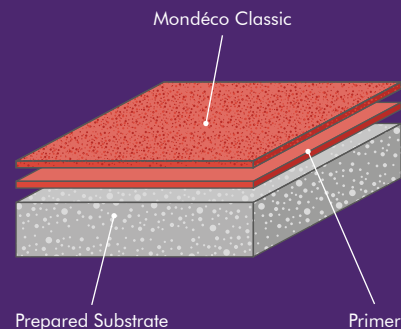
36 hrs

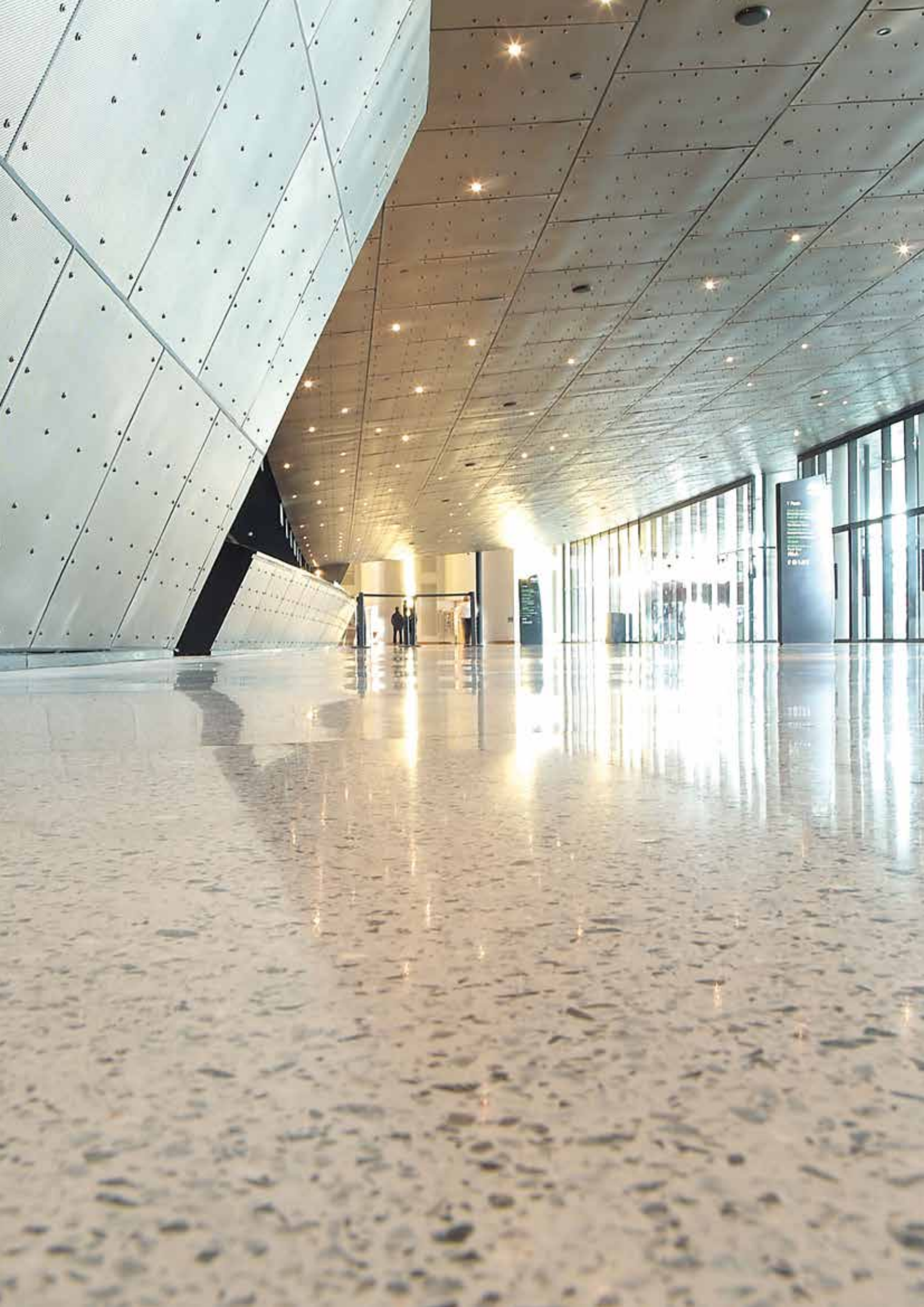
Full Chemical Cure

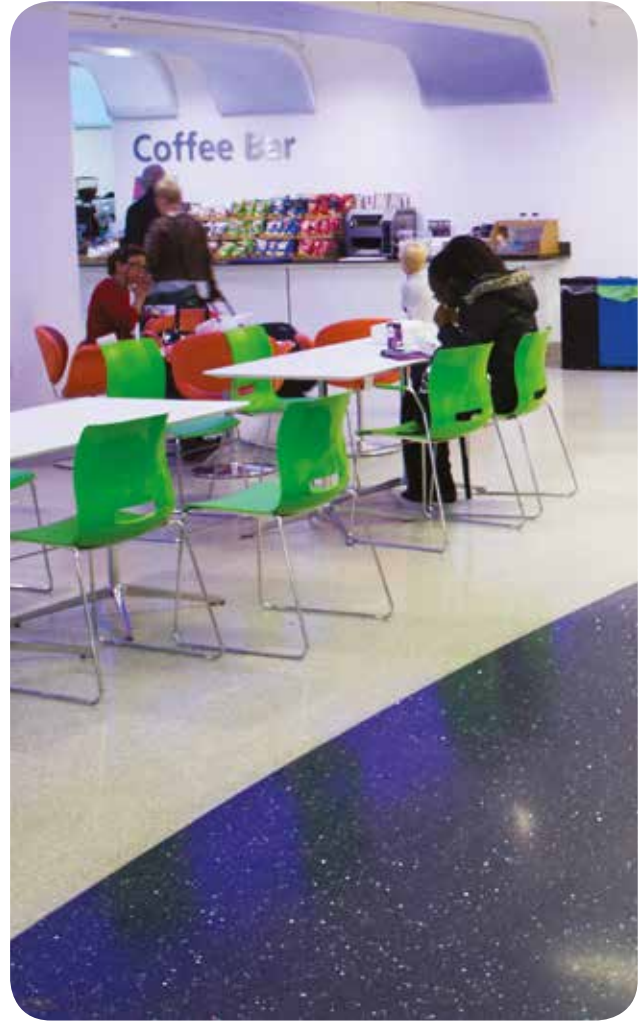
12 days

7 days

7 days









# Mondéco Crystal Ice (9mm)

A seamless, highly decorative, epoxy resin terrazzo floor finish containing a mix of mirrored and clear glass aggregates.

Delivering a sparkling finish underfoot, the system is ideal for environments where design and durability are essential such as airport and railway terminals, shopping centres and hotels.



### Eye-Catching:

Offers extensive design potential with a glamorous, sparkling finish.



### Seamless Finish:

Delivers a seamless finish (except for underlying slab joints).



### Chemical Resistant:

Withstands routine cleaning regimes and accidental solvent spillage.



### High Strength:

Stands up to sustained pedestrian traffic and general wear and tear.



### Durable:

Graded as FeRFA Type 8 for a lengthy service life.

## Standard Colours\*



Oyster White



Dusty Grey



Agate Grey



Provence Blue

## Technical Profile

### FIRE RESISTANCE:

EN 13501-1	B <sub>FL</sub> -s1
------------	---------------------

### SLIP RESISTANCE:

BS 7976-2	Dry >40 Low slip potential
-----------	-------------------------------

### TEMPERATURE RESISTANCE:

Tolerant of sustained temperatures up to 60°C

### WATER PERMEABILITY:

Karsten Test	Nil (Impermeable)
--------------	-------------------

### WEAR RESISTANCE:

EN 13892-4	Max. wear depth <50 μm
------------	------------------------

### IMPACT RESISTANCE:

EN ISO 6272	4 Nm
-------------	------

### COMPRESSIVE STRENGTH:

EN 13892-2	>55 N/mm <sup>2</sup>
------------	-----------------------

### FLEXURAL STRENGTH:

EN 13892-2	>20 N/mm <sup>2</sup>
------------	-----------------------

### TENSILE STRENGTH:

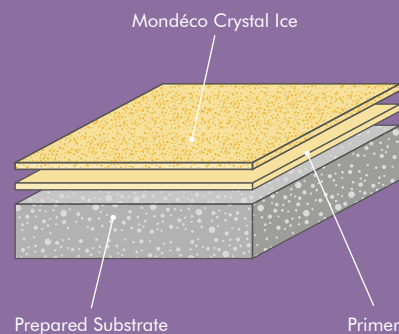
BS 6319-7	>10 N/mm <sup>2</sup>
-----------	-----------------------

### BOND STRENGTH:

EN 13892-8	>2.0 N/mm <sup>2</sup>
------------	------------------------

### SPEED OF CURE:

	10°C	20°C	30°C
Light Traffic	24 hrs	16 hrs	10 hrs
Full Traffic	72 hrs	48 hrs	36 hrs
Full Chemical Cure	12 days	7 days	7 days



\*The applied colours may differ from the examples shown. Special colour blends and tailored aggregate mixes are available. For further information and samples, contact your local Flowcrete office.

# Mondéco Exotic (9mm)

A luxurious epoxy resin terrazzo floor finish comprising marble chippings and a choice of mirrored glass or mother of pearl aggregates.

Suitable for environments looking to make a design statement, the system will not fail to impress underfoot while standing the test of time.



### Creative Potential:

Vast design flexibility through broad aggregate and colour blend choice.



### Seamless Finish:

Delivers a seamless finish (except for underlying slab joints).



### Chemical Resistant:

Resists deterioration from frequent exposure to aggressive cleaning agents.



### Abrasion Resistant:

Stands up to sustained pedestrian traffic to avoid scratches and damage.



### Durable:

Highly durable finish is graded as FeRFA Type 8 for an impressive lifespan.

## Standard Resin Colours and Aggregate Blends\*



Oyster White  
(Mondéco Exotic Ice)



Dusty Grey  
(Mondéco Exotic Ice)



Agate Grey  
(Mondéco Exotic Ice)



Provence Blue  
(Mondéco Exotic Ice)



Oyster White  
(Mondéco Exotic Pearl)



Dusty Grey  
(Mondéco Exotic Pearl)



Agate Grey  
(Mondéco Exotic Pearl)



Provence Blue  
(Mondéco Exotic Pearl)

\*The applied colours may differ from the examples shown. Special colour blends and tailored aggregate mixes are available. For further information and samples, contact your local Flowcrete office.

## Technical Profile

FIRE RESISTANCE	
EN 13501-1	B <sub>FL</sub> -s1

SLIP RESISTANCE	
BS 7976-2	Dry >40 Low slip potential

TEMPERATURE RESISTANCE:	
Tolerant of sustained temperatures up to 60°C	

WATER PERMEABILITY:	
Karsten Test	Nil (Impermeable)

WEAR RESISTANCE:	
EN 13892-4	Max. wear depth < 50 µm

IMPACT RESISTANCE:	
EN ISO 6272	4 Nm

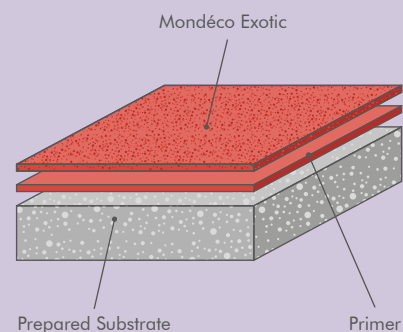
COMPRESSIVE STRENGTH:	
EN 13892-2	>55 N/mm <sup>2</sup>

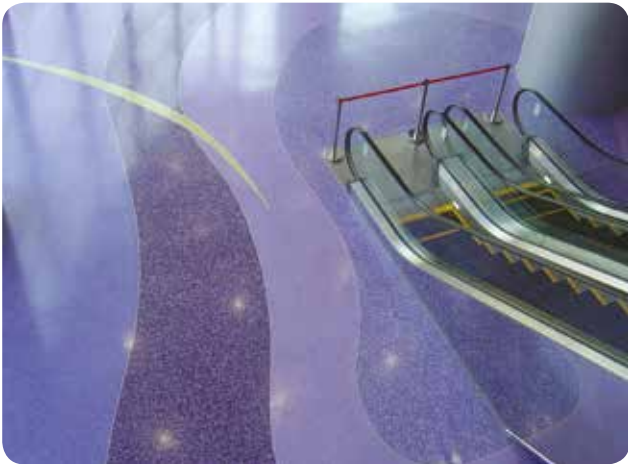
FLEXURAL STRENGTH:	
EN 13892-2	>20 N/mm <sup>2</sup>

TENSILE STRENGTH:	
BS 6319-7	>10 N/mm <sup>2</sup>

BOND STRENGTH:	
EN 13892-8	>2.0 N/mm <sup>2</sup>

SPEED OF CURE:	10°C	20°C	30°C
Light Traffic	24 hrs	16 hrs	10 hrs
Full Traffic	72 hrs	48 hrs	36 hrs
Full Chemical Cure	12 days	7 days	7 days







# Mondéco Earth (7–8mm)

A decorative epoxy terrazzo floor finish containing granite and flint aggregates, also available in an antistatic grade.

Providing a highly resistant and seamless surface, this system is suitable for use in food and pharmaceutical process and production areas as well as in the healthcare industry, where hygiene and durability are of key concern.



### Seamless Application:

Delivers a hygienic seamless surface for low maintenance regimes.



### Wear Resistant:

Holds its own against impact, traffic and chemical attack.



### Attractive:

Aesthetically pleasing to enhance work environments.



### Durable:

FeRFA type 8 grading makes this system suited to tougher industrial environments.



### Antistatic Grade Available:

Meets EN IEC 61340 anti-static requirements to protect equipment.

## Standard Colours\*



Provence



Coconut



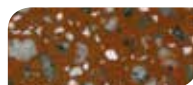
Dusty Grey



Agate Grey



Oyster White



Chilli Pepper

\*The applied colours may differ from the examples shown. Special colour blends and tailored aggregate mixes are available. For further information and samples, contact your local Flowcrete office.

## Technical Profile

### FIRE RESISTANCE:

EN 13501-1	B <sub>FL</sub> -s1
------------	---------------------

### SLIP RESISTANCE:

BS 7976-2	Dry >40 Low slip potential
-----------	-------------------------------

### TEMPERATURE RESISTANCE: MONDÉCO EARTH

Tolerant of sustained temperatures up to 60°C

### TEMPERATURE RESISTANCE: MONDÉCO ESD EARTH

Softens in temperatures over 70°C

### WATER PERMEABILITY:

Karsten Test	Nil (Impermeable)
--------------	-------------------

### WEAR RESISTANCE:

EN 13892-4	Max. wear depth < 50 µm
------------	-------------------------

### IMPACT RESISTANCE:

EN ISO 6272	16 Nm
BS 8204-1	Cat: A (<0.5mm)

### COMPRESSIVE STRENGTH:

EN 13892-2	>55 N/mm <sup>2</sup>
------------	-----------------------

### FLEXURAL STRENGTH:

EN 13892-2	>20 N/mm <sup>2</sup>
------------	-----------------------

### BOND STRENGTH:

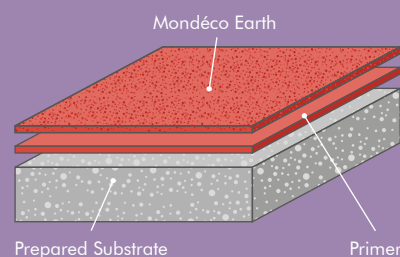
EN 13892-8	>2.0 N/mm <sup>2</sup>
------------	------------------------

### ELECTRICAL RESISTANCE: MONDÉCO ESD EARTH

EN IEC 61340-5-1	5.0 × 10 <sup>4</sup> – 1.0 × 10 <sup>9</sup> Ω
------------------	---

### SPEED OF CURE:

	10°C	20°C	30°C
Light Traffic	24 hrs	16 hrs	10 hrs
Full Traffic	72 hrs	48 hrs	36 hrs
Full Chemical Cure	12 days	7 days	7 days



# Mondéco TZ (7mm)

A seamless polyurethane terrazzo floor finish that is resistant to high temperatures and steam cleaning.

Ideal for industrial applications such as chemical, food and pharmaceutical processing areas where floors are subject to hot fluid spillages, heavy traffic, impact and aggressive cleaning agents.



### Hygienic:

Contains Polygiene®, an antimicrobial additive that destroys 99.9% of bacteria.



### Chemical Resistant:

High level of protection against abrasion through chemical attack.



### Temperature Resistant:

Excellent thermal shock resistance to prevent damage to floor surface.



### Attractive:

Bright colours and flexible design creates a lasting impression underfoot.



### Durable:

Antimicrobial performance properties last the lifetime of the building.

## Standard Colours\*



Cream



Mustard



Dark Green



Ochre



Mid Grey



Tile Red

\*The applied colours may differ from the examples shown. Special colour blends and tailored aggregate mixes are available. For further information and samples, contact your local Flowcrete office.

## Technical Profile

### FIRE RESISTANCE:

EN 13501-1	B <sub>FL</sub> -s1
------------	---------------------

### SLIP RESISTANCE:

BS 7976-2	Dry >40 Low slip potential
-----------	-------------------------------

### TEMPERATURE RESISTANCE:

120°C (intermittent spillages) -40°C to 105°C (sustained dry heat)
---

### WATER PERMEABILITY:

Karsten Test	Nil (Impermeable)
--------------	-------------------

### VAPOUR PERMEABILITY:

2g / m <sup>2</sup> / 8mm / 24 hours
--------------------------------------

### WEAR RESISTANCE:

EN 13892-4	Max. wear depth < 50 µm
------------	-------------------------

### IMPACT RESISTANCE:

EN ISO 6272	20 Nm
-------------	-------

### COMPRESSIVE STRENGTH:

EN 13892-2	>55 N/mm <sup>2</sup>
------------	-----------------------

### FLEXURAL STRENGTH:

EN 13892-2	>20 N/mm <sup>2</sup>
------------	-----------------------

### TENSILE STRENGTH:

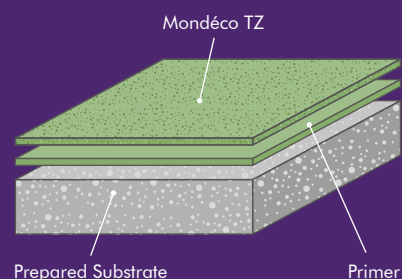
BS 6319-7	>8 N/mm <sup>2</sup>
-----------	----------------------

### BOND STRENGTH:

EN 13892-8	>2.0 N/mm <sup>2</sup>
------------	------------------------

### SPEED OF CURE:

	10°C	20°C	30°C
Light Traffic	24 hrs	16 hrs	10 hrs
Full Traffic	72 hrs	48 hrs	36 hrs
Full Chemical Cure	12 days	7 days	7 days







## Flowcrete Group

Flowcrete Group Ltd is the world's leading specialist in seamless resin flooring, screeds and other coating technologies, with operations across five continents.

## Flowcrete Europe

Baltic States	+48 883 303 880	latvia@flowcrete.com
Bulgaria	+359 898 61 58 31	bulgaria@flowcrete.com
Denmark	+46 435 40 01 10	denmark@flowcrete.com
France	+33 1 60 61 74 42	france@flowcrete.com
Germany	+49 6119 016645	germany@flowcrete.com
Italy	+39 339 4853258	italy@flowcrete.com
Norway	+47 64 86 08 30	norway@flowcrete.com
Poland	+48 22 879 89 07	poland@flowcrete.com
Romania	+48 883 303 880	romania@flowcrete.com
Russia	+7 495 645 83 18	rus@flowcrete.com
Spain	+34 937 07 0872	spain@flowcrete.com
Sweden	+46 435 40 01 10	sweden@flowcrete.com
Turkey	+90 532 416 66 52	turkey@flowcrete.com
UK	+44 1270 753 000	uk@flowcrete.com

## Flowcrete International

Australia	+61 7 3205 7115	australia@flowcrete.com
Bangladesh	+880 1755563376	bangladesh@flowcrete.com
China	+86 10 8472 1912	china@flowcrete.com
Hong Kong	+852 2795 0478	hongkong@flowcrete.com
India	+91 44 4202 9831	india@flowcrete.com
Indonesia	+62 21 252 3201	indonesia@flowcrete.com
Malaysia	+60 3 6277 9575	malaysia@flowcrete.com
Philippines	+63 917 514 2696	philippines@flowcrete.com
Singapore	+65 6848 7166	singapore@flowcrete.com
South Africa	+27 31 461 3411	southafrica@flowcrete.com
Thailand	+66 2539 3424	thailand@flowcrete.com
UAE	+971 4 886 4728	uae@flowcrete.com
Vietnam	+84 8 3821 6561	vietnam@flowcrete.com

## Flowcrete Americas

Brazil	+55 11 3230 1107	brazil@flowcrete.com
Canada	+1 800 218 1850	canada@flowcrete.com
Chile	+56 2 2938 1962	chile@flowcrete.com
Colombia	+57 1 381 9254	colombia@flowcrete.com
Mexico	+01 800 099 0468	mexico@flowcrete.com
USA	+1 936 539 6700	usa@flowcrete.com

\*Whilst every care has been taken to ensure that the information included in this document was accurate at the time of printing, Flowcrete reserve the right to change product specifications at any time without prior notice. The photographs and colours reproduced in this publication are within the constraints of the printing process and are not to be used for matching purposes. All photographs are used for approximate representation only and may not show the actual products on offer. E&OE.